



VALUING NATURE

WetlandLIFE

Tim Acott PI

University of Greenwich: **Tim Acott, Adriana Ford**

Natural Resource Institute: **Gay Gibson, Frances Hawkes, Bob Cheke**

University of Bristol: **Peter Coates**

Cranfield University: **Anil Graves, Joe Morris, Sharanya Basu Roy**

University of Brighton: **Andrew Church, Neil Ravenscroft, Mary Gearey**

Public Health England: **Jolyon Medlock, Alex Vaux**

Forest Research: **David Edwards**

Independent artists: **Helmut Lemke, Kerry Morrison, Victoria Leslie**

Art consultant: **Chris Freemantle**



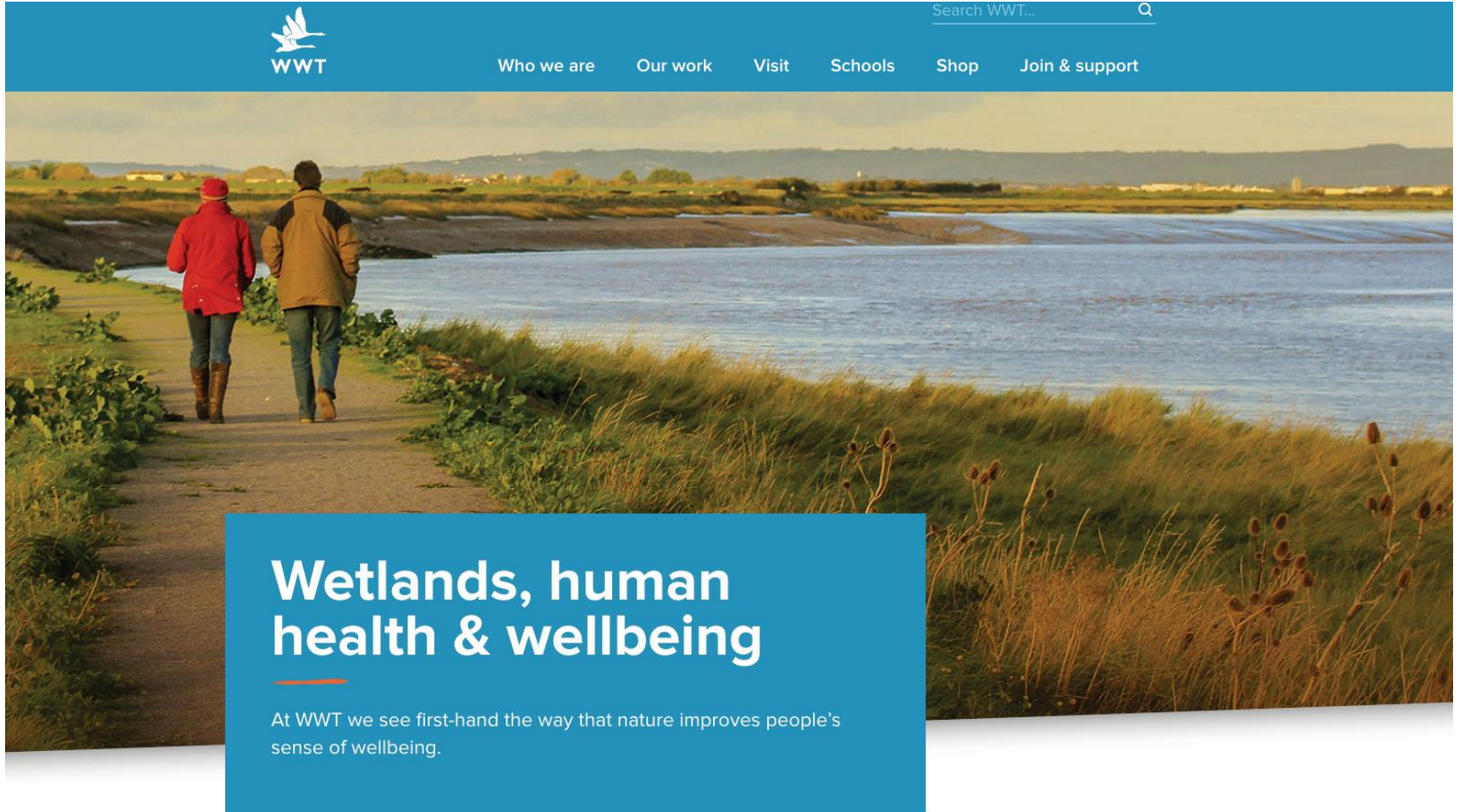
www.wetlandlife.org

@wetlandlife

#wetlandlife



Emergent narratives – Health and Wellbeing

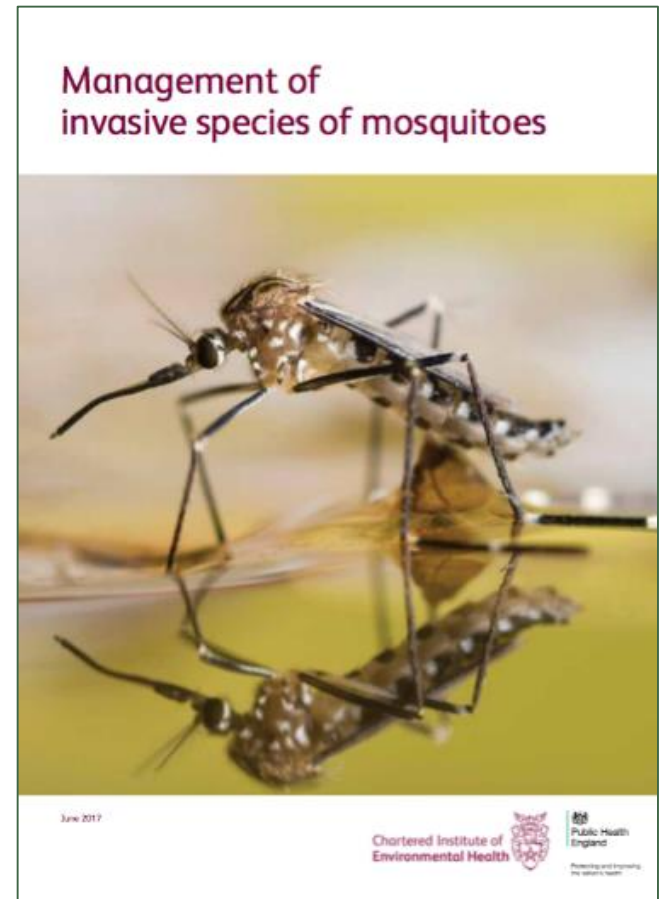


Emergent narratives - mosquitoes

“In the UK mosquitoes can create a distressing biting nuisance, which affects the well-being of local residents and can pose a major economic problem in areas where tourism is a main source of income to the local community.

Experts agree that climate change will make the UK more vulnerable to the problems caused by mosquitoes”.

(Quoted from Management of Invasive Species of Mosquitoes, 2017, pg. 2)



Project Aims

- Develop our understanding of diverse wetland values and how mosquitoes may or may not affect these values;
- Contribute knowledge for the management of wetlands to enhance social and ecological wellbeing;
- Explore and create narratives around people's relationships with wetlands and mosquitoes

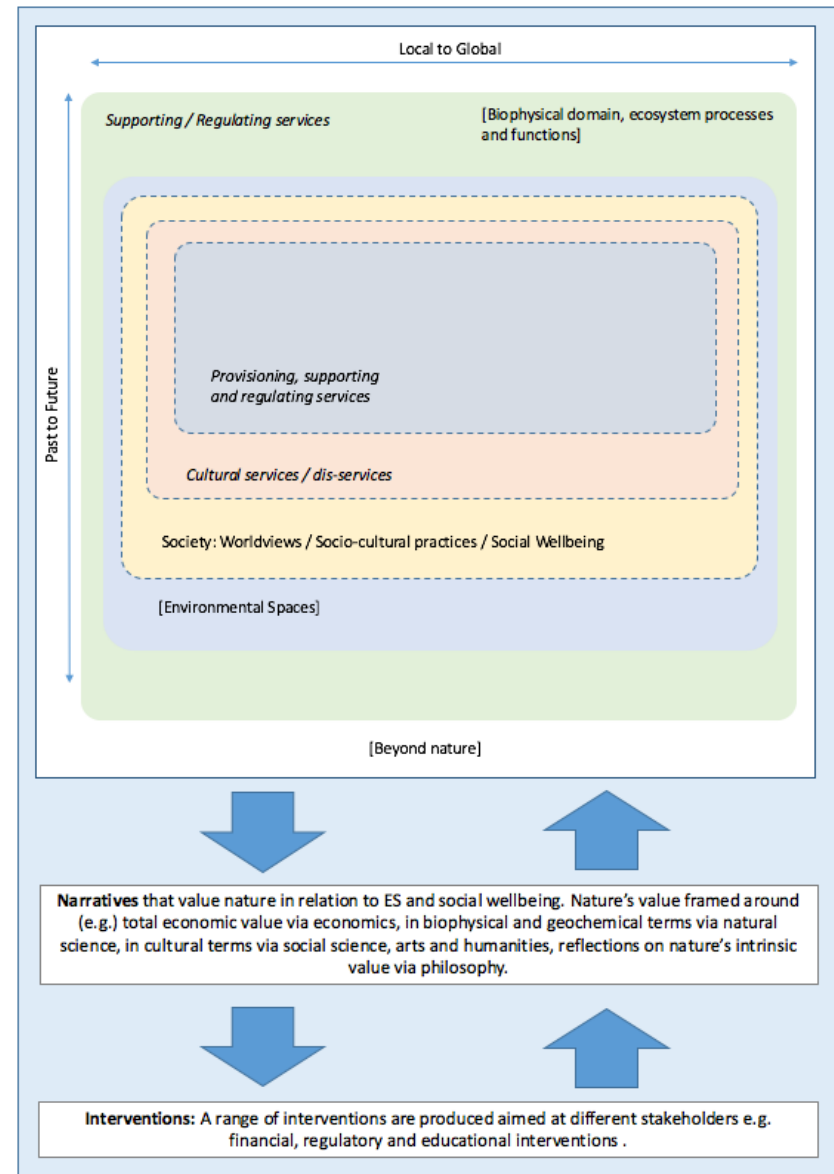


- Conceptual Framework
- Ecological Surveys (mosquitoes)
- Economic Valuation
- Environmental History
- Social Science (Community Voice, interviews)
- Contemporary social representations
- Photos essay
- Artists work

Nested Ecosystem Services

- Services underpinned by relational socio-ecological networks
- Revealing these relations requires multiple approaches to knowledge
- Values are linked to 'nature' narratives
- Valuing wetlands is an inter- (multi, trans, a-, un-,) disciplinary endeavour
- WetlandLIFE has pursued the values of wetlands by bring together a multi-disciplinary team producing a range of interdisciplinary outputs

Fig 1. Nested ecosystem services and narratives of valuing nature

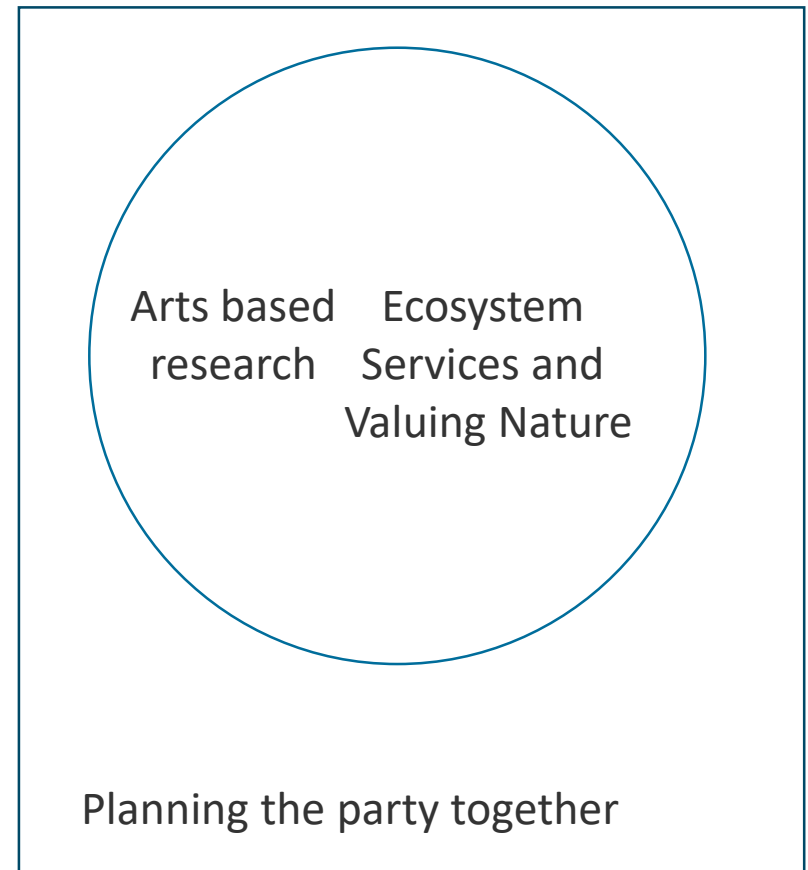
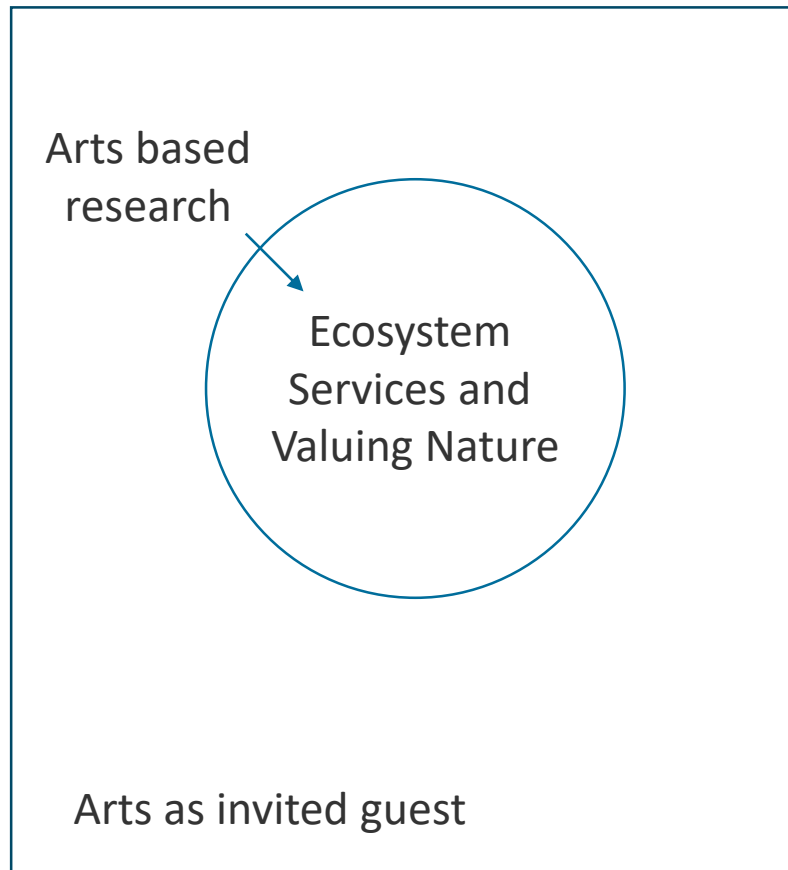


Ecosystem Services and Valuing Nature

- Limitations of current approaches recognised
- Where are we from a disciplinary perspective?
- Natural Science and Economics: Foundational
- Social Science: Widely accepted and adopted e.g. shared values
- Arts and Humanities: Uncertainty
- Difficulties start to arise at the arts / science interface



Ecosystem Services and Valuing Nature



BUT: Does part of arts value lie in being an outsider, independent

Epistemological Equality (WetlandLIFE example)

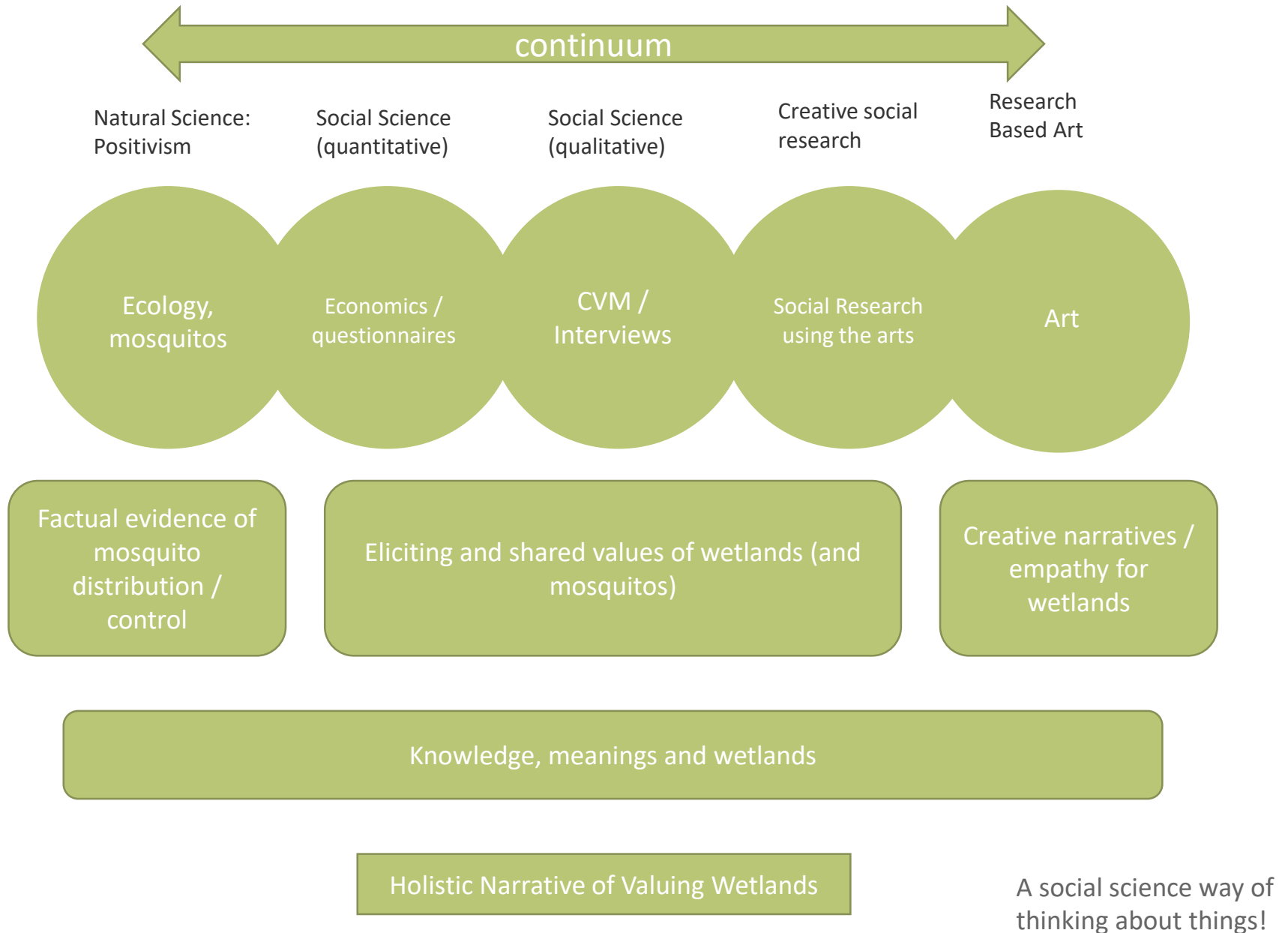




Photo by Rob Fraser/somewhere-nowhere.com

Valuing Arts & Arts Research

Valuing Nature Paper | October 2019

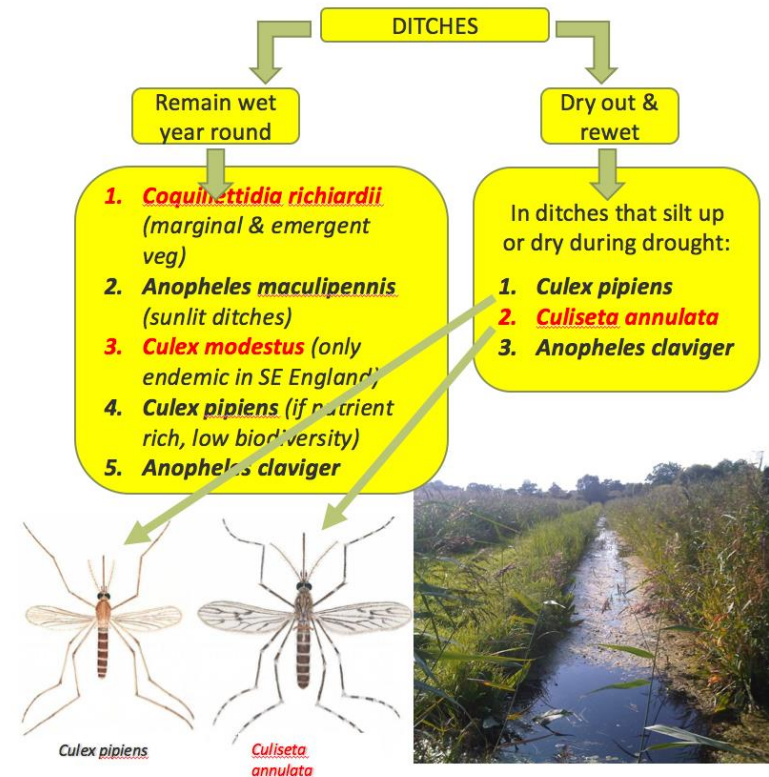
Impact and Implications: Practical Outputs

- Mosquito Handbook for use by **Public Health England** and **Wetland Stakeholders**

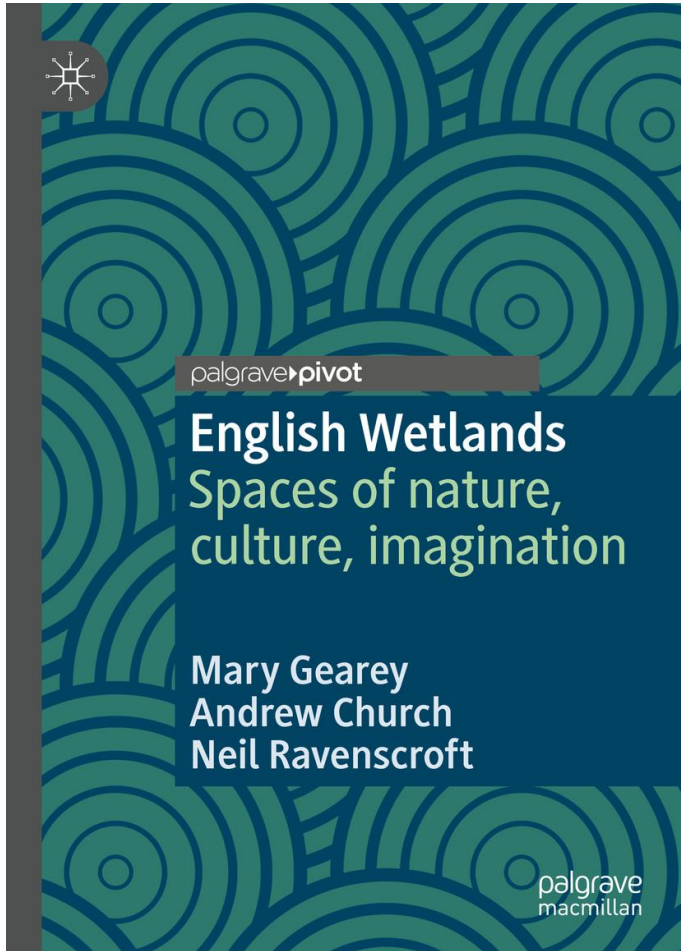
An algorithm for predicting the mosquito species likely to be associated with wetland habitats in England was devised.

This tool will be incorporated into a practical handbook for wetland site managers to enable targeted site surveys for mosquito fauna, informed planning of wetland expansion and restoration schemes, and responsiveness to enquiries from the public regarding mosquitoes and wetlands. This will be produced as an interdisciplinary output with ecological information sensitively embedded within socio-cultural perspectives.

WetlandLIFE already approached by two research partnerships asking for information on how to deal with problems of mosquito nuisance in relation to wetland expansion / management



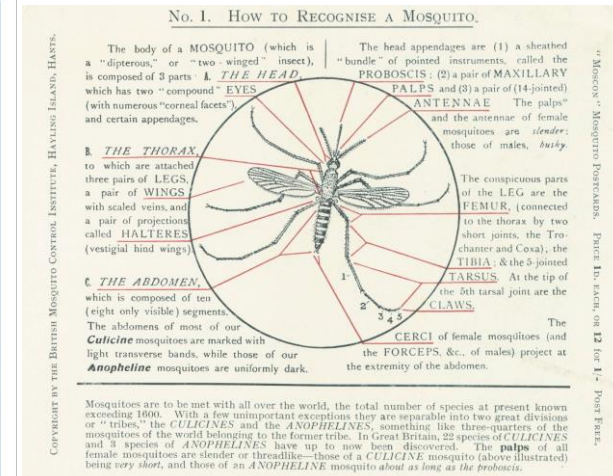
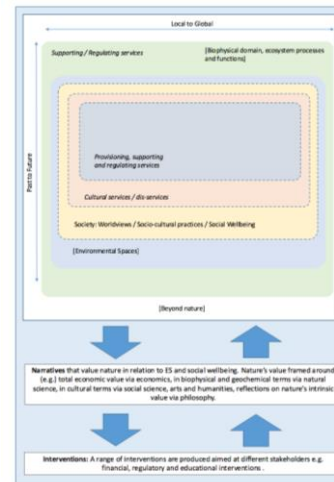
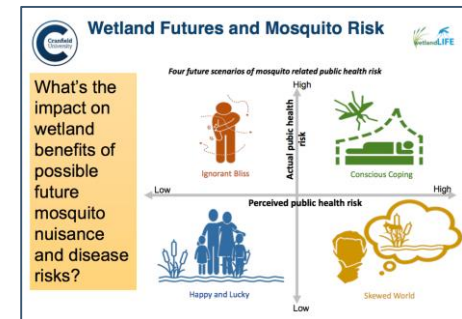
Impact and Implications: Academic Outputs



Endorsements:

"This book is warmly welcomed. I have been waiting for such a book on this topic for 25 years since I began researching and writing about wetlands from a conservation, cultural, human and historical point of view in the early 1990s".

Rod Giblett (Author of Canadian Wetlands, Postmodern Wetlands, Cities and Wetlands, etc.,:

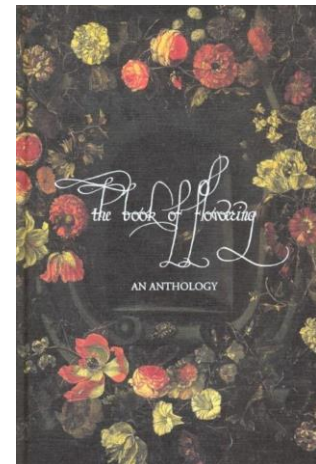


Impact and Implications: Developing the Conversations / Empathy

Photo essay and sense of
place



1. Creating and helping others to create new values and positive narratives around the importance of wetlands
2. RAMSAR Culture Network
3. Wetlands on Wheels
4. Hide and Seek
5. Photo Essay



Hide and Seek initiative by Victoria Leslie



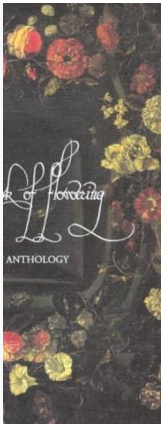
Impact and Implications: Developing the Conversations / Empathy

1. Create new around
2. RAM
3. Wet
4. Hide
5. Phot



Mosquito and Me - a narrative on mosquitoes in English wetlands in 2018

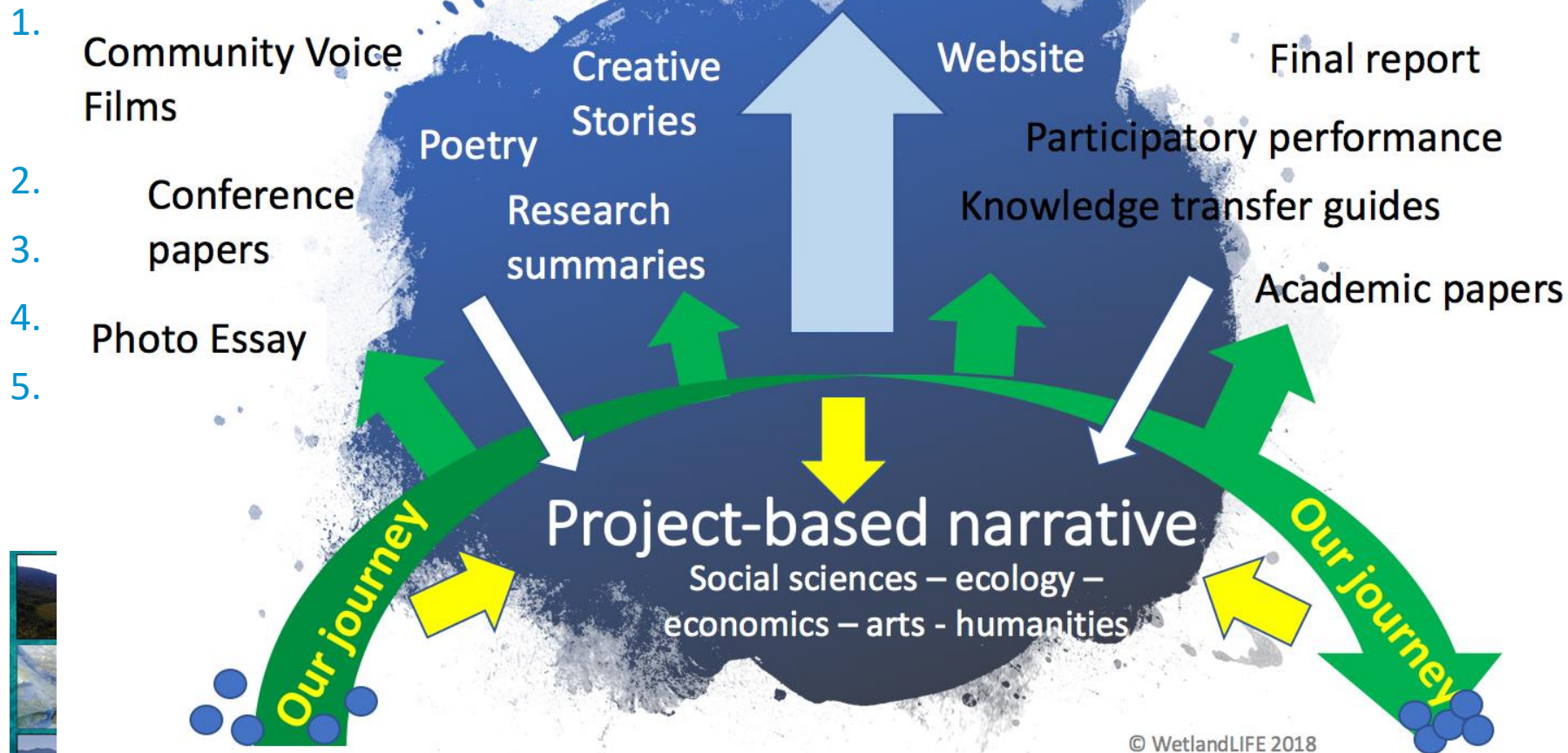
Species by
eslie



Hide and Seek initiative by Victoria Leslie



- Wetland managers • Wetland Users • Local communities • Academia
- Wetland Advocates • Environmental decision-makers • Ramsar



WetlandLIFE Approach

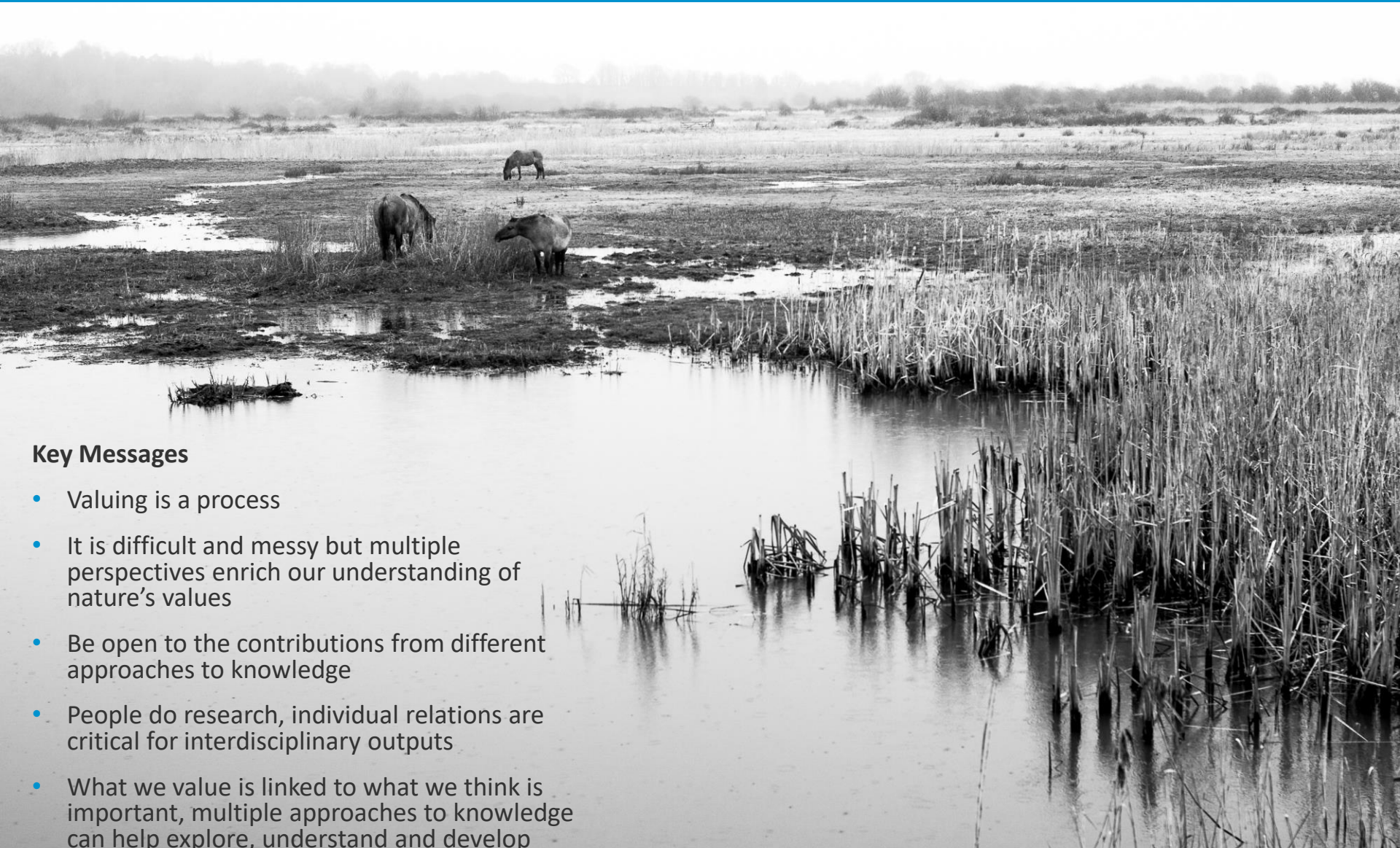
Valuing Nature and Valuing Wetlands



1. Conceptual Nested Ecosystem Services / relationality and wetlands
2. Diverse approaches to knowledge (ecology, economics, history, social science, art) giving rise to Epistemological Equality and reflections on disciplinarity
3. Case examples of art based research and valuing wetlands (nature) through film, photography, writing and performance working alongside science and social science perspectives.
4. Values as narratives composed of multiple

WetlandLIFE Approach

Valuing Nature and Valuing Wetlands



Key Messages

- Valuing is a process
- It is difficult and messy but multiple perspectives enrich our understanding of nature's values
- Be open to the contributions from different approaches to knowledge
- People do research, individual relations are critical for interdisciplinary outputs
- What we value is linked to what we think is important, multiple approaches to knowledge can help explore, understand and develop

People are behind disciplines

Taking the bite out of wetlands: managing mosquitoes and the socio-ecological value of wetlands for wellbeing or

University of Greenwich: **Tim Acott, Adriana Ford**

Natural Resource Institute: **Gay Gibson, Frances Hawkes, Bob Cheke**

University of Bristol: **Peter Coates**

Cranfield University: **Anil Graves, Joe Morris, Sharanya Basu Roy**

University of Brighton: **Andrew Church, Neil Ravenscroft, Mary Gearey**

Public Health England: **Jolyon Medlock, Alex Vaux**

Forest Research: **David Edwards**

Independent artists: **Helmut Lemke, Kerry Morrison, Victoria Leslie**

Art consultant: **Chris Freemantle**



Dr Tim Acott



Professor Robert A. Cheke



Professor Andrew Church



Professor Peter Coates



Dr David Edwards



Dr Adriana Ford



Chris Freemantle



Dr Mary Gearey



Professor Gabriella Gibson



Dr Anil Graves



Dr Frances Hawkes



Helmut Lemke



Victoria H. Leslie



Dr Jolyon Medlock



Professor Joe Morris



Dr Kerry Morrison



Dr Sharanya Basu Roy



Professor Neil Ravenscroft



Alex Vaux